



European  
**Chemical Resistant SPC**  
by Durcon

Counter Tops  
Table Tops  
Work Stations  
Shelving  
Mobile Carts  
for  
R&D  
Science  
Education  
Healthcare  
Forensics  
Government



**Introducing Chemical Resistant  
Solid Phenolic Compact (SPC)**

*Durcon, a Wilsonart company, now provides a lightweight and disinfectable solution for today's classroom, laboratory, health care and industrial facilities. Ideal for horizontal or vertical applications, Chemical Resistant SPC can be used in any room where combinations of liquids, chemicals, bacteria and extreme temperatures may create safety concerns for less robust surfaces.*



A WILSONART COMPANY

# A Breakthrough Laboratory Surface Solution!

Chemical Resistant Solid Phenolic Compact (SPC) is the new lightweight laboratory surfacing solution from Durcon. This specially engineered worktop features outstanding resilience to prolonged chemical attack and a rhino tough electron beam cured (EBC) surface that resists scuffs and scratches at the top of the range for phenolic panels.

SPC sheets can be ordered in conveniently sized sheets for fabrication with common woodworking tools. Use Chemical Resistant SPC for worktops, shelving, table tops, cabinet and cart components - virtually anywhere a high-quality surface is required.

Plus, SPC is backed by Durcon's highly recommended customer service and 10-year limited warranty!



## Durable & User-Friendly

### The Most Durable Compact Laminate

Industry Leading Scratch Resistance



SEFA Approved Chemical Resistance



Light Fastness



Impact Resistant



Heat Resistant



Non Absorbant



### The User-Friendly Compact Laminate



Machinable with Common Tooling



Light Weight



Non-Glare Finish



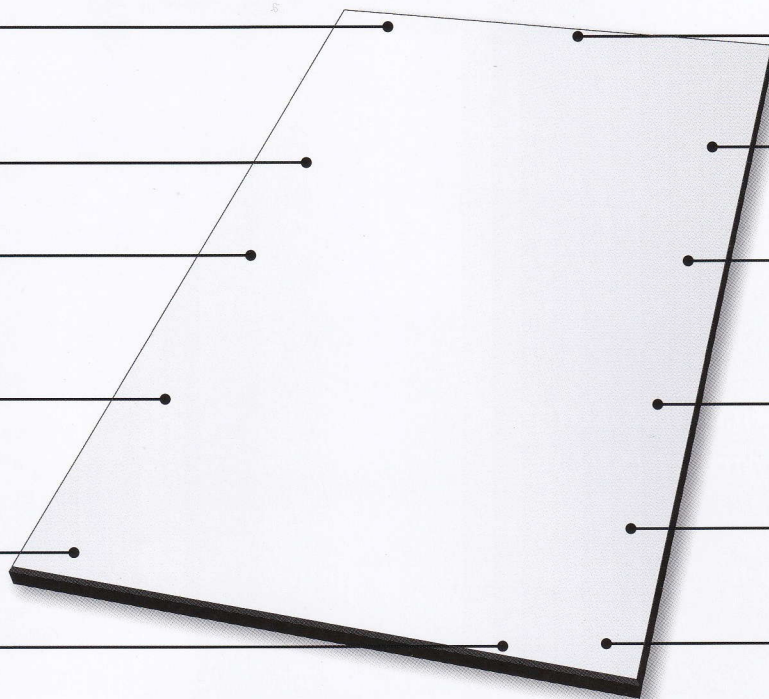
Food Safe



Fully Disinfectable



Custom Fabricated for Quick Installation



# Available in Traditional Laboratory Colors\*



Carbon Black



Steel Grey



Glacier White

## Thickness Options

- 20 mm
- 16 mm
- 13 mm
- 6 mm
- Custom thickness surfacing solutions upon request

## Sheet Sizes



\*All Chemical Resistant SPC worktops are electron beam cured. Color swatches are provided for general reference only. Please obtain a sample chip to verify color prior to ordering.

### Chemical Test Results

Chemical Tested (cont.)	Rating	Chemical Tested	Rating
Tincture of Iodine	1	Amyl Acetate	0
Methyl Ethyl Ketone	1	Ethyl Acetate	0
Methylene Chloride	0	Acetic Acid, 98%	0
Mono Chlorobenzene	1	Acetone	0
Naphthalene	0	Acid Dichromate, 5%	1
Nitric Acid, 20%	0	Butyl Alcohol	0
Nitric Acid, 30%	0	Ethyl Alcohol	0
Nitric Acid, 70%	0	Methyl Alcohol	0
Phenol, 90%	1	Ammonium Hydroxide, 28%	1
Phosphoric Acid, 85%	0	Benzene	0
Silver Nitrate, Saturated	0	Carbon Tetrachloride	0
Sodium Hydroxide, 10%	0	Chloroform	0
Sodium Hydroxide, 20%	0	Chromic Acid, 60%	1
Sodium Hydroxide, 40%	0	Cresol	1
Sodium Hydroxide, Flake	0	Dichloro Acetic Acid	1
Sodium Sulfide, Saturated	0	Dimethylformamide	0
Sulfuric Acid, 25%	0	Dioxane	0
Sulfuric Acid, 85%	0	Ethyl Ether	0
Sulfuric Acid, 96%	0	Formaldehyde, 37%	0
Sulfuric Acid 85%, and Nitric Acid 70%, equal parts	0	Formic Acid, 90%	1
Toluene	0	Furfural	0
Trichloroethylene	0	Gasoline	0
Xylene	0	Hydrochloric Acid, 37%	0
Zink Chloride, Saturated	0	Hydrofluoric Acid, 48%	1
		Hydrogen Peroxide, 28%	0

#### Chemical Resistance Test Evaluation

Chemical resistance tests are performed in accordance with the Scientific Equipment and Furniture Association's (SEFA) Recommended Practices for Laboratory Work Surfaces.

0=No Effect

1=Excellent

2=Good

3=Fair

### Physical Test Results

Property Tested	Test	Results
Resistance to Scratch	EN 438-2:25	5
Resistance to Surface Wear	EN 438-2:10	Initial Point 150 Rev.
Resistance to Water Vapor	EN 438-2:14	5
Resistance to Dry Heat	EN 438-2:16	5
Resistance to Wet Heat	EN 12721	5
Resistance to Staining	EN 438-2:26	Group 1 = 5 Group 2 = 5 Group 3 = 4
Resistance to Immersion in Boiling Water	EN 438-2:12	4
Dimensional Stability at Elevated Temperature	EN 438-2:17	Log. 0.30 Trans. 0.60
Resistance to Color Change	EN 438-2:27	4 to 5
Modulus of Elasticity	EN ISO 178 / ASTM 638-08	≥9000 Mpa
Flexural Strength	EN ISO 178 / ASTM 790-08	≥80 Mpa
Density	EN 1183-1 / ASTM 792-08	≥1/35 g/cm3
VOC Emission	None Listed	Class A / Greenguard Gold

#### EN Physical Test Evaluation

Physical tests are performed in accordance with EN 438 fir decorative high-pressure laminate (HPL) sheets based on thermosetting resins.

5=No Effect

4=Excellent

3=Good

2=Fair

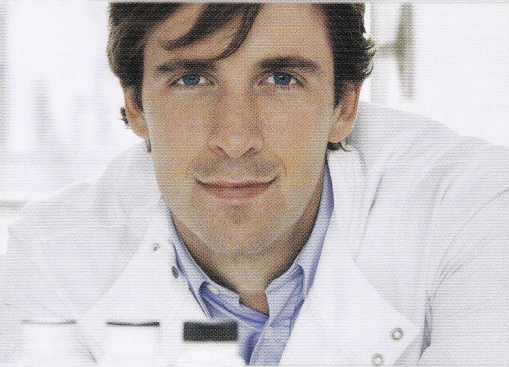
1=Fail



A WILSONART COMPANY



*Chemical Resistant SPC*  
by Durcon



*The NEW Lab-grade  
Worktop From Durcon*



### CONTACT

[WWW.DURCON.COM](http://WWW.DURCON.COM)

### INQUIRE

**DURCON**

206 Allison Drive., Taylor, TX 76574

+1 512.595.8000

[SALES@DURCON.COM](mailto:SALES@DURCON.COM)

### Certifications & Affiliations



EN  
Certified

